

The Lamplighter

A Newsletter of **Community Presbyterian Church**
529 NW 19th St
Redmond, OR 97756
541-548-3367 www.redmondpc.org



Growing In Christ and Loving One Another

MARCH 2025

Message From Session

Dear CPC, your Session met on February 18th, to review and conduct the work of our church. Led by Rev. Ann Bowersox, we reviewed a preparatory document to be filed on the national online site for pastor search. Considering your recent responses to the Genesis questionnaire, each Elder was asked to respond to 5 key questions with our own hopes for a new pastor, as well as strengths and resources of CPC and of Redmond.

(See the document [HERE](#) or reach out to Gina in the office.)

These responses were compiled (several times!) and reviewed by Rev. Ann and Rev. Mike Wilson, our COM representative to Presbytery. This survey and additional materials will now be uploaded to the national search website.

Although the competition for “permanent” pastor supply is immense, CPC has a number of advantages. Recent baptisms, new members, size of congregation, financial assets, and Redmond and Central Oregon location are all distinctive for us. We remain hopeful!

Elder Britt provided the “Good News” that a Children and Youth Team is developing a curriculum and that a number of children are in the program and currently enjoying crafts. There will be an Easter Egg Hunt for the community at 9:30 am on Easter morning!

For the rest of us, we approved the development of a Caretaker Group, to be led by Everett Nay and the Wellness Team/Deacons.

The Stated Clerk of our Presbytery provided important information regarding the potential entry of Custom Enforcement officers (ICE) into our churches. While CPC does not declare ourselves to be a “sanctuary,” we do intend to protect those who worship with us. This will include the Iglesia Betsaida Church worshipers. Session will soon have printed information available in the narthex or church office.

Growing in God’s love, and loving one another.

Rick Hoffman, Elder

CPC Session - Bob Ahern, Britt Anderson-Mueller, Truman Grandey, Rick Hoffman, Linda Jackson-Shaw, George Johnson, Luann Johnson, Carol Nelson, Diane Putnam, Rev. Ann Bowersox - Moderator, and Nancy Patterson - Clerk of Session



Music Ministry March 2025



why did he die at the ninth hour?

Traditionally, the day of the Hebrews begins at 6 am (designated as the zero hour) and they tally the hours from that point onwards. Noon is the sixth hour and their day concludes at 6 pm (the 12th hour). Their ninth hour aligns with our current 3 pm. In Jewish practice, the ninth hour is a time of prayer and the hour of afternoon sacrifice. Three of the gospels make note that the ninth hour was the time of Christ's death. Many historians and theologians believe it was no coincidence that the Jewish tradition of evening sacrifice and prayers coincided with the hour God planned for his son to sacrifice himself for our sins.

You are invited to join us in presenting this cantata. We practice at 9 am on Sunday mornings in the choir room. More importantly, consider getting into a habit of praying or giving to others during this Lenten season. Maybe even make this a 3:00 pm ritual in your day. When we realize the sacrifice God, through Jesus, made for us, we can embrace the power of "the ninth hour" more fully.

Blessings, *Karen Baldwin-Kuntz* - Director of Music Ministries

The Deacon of the Month for March is Rocky Johnson

The Deacon of the Month is On Call to Help With Special Needs.

"I have been a long-time Presbyterian and have served in three church Sessions. I take pleasure in serving as a deacon and actively contributing to our church and community.

Luann and I have been part of the CPC family since 2012, when we moved to Redmond after I retired from a career in banking. With our daughter, son-in-law, and three grandchildren in Bend, we are in the right place. Thank you for the opportunity to serve as a deacon."



Deacon's Report

Your deacons continue to try and act as the hands, feet, ears, and eyes of God as we move into the New Year. We have a full complement of deacons this year.



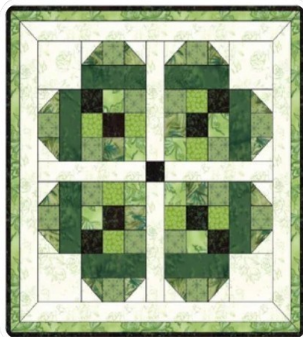
Thank you all for volunteering for this important work. We provide transportation for those who need it. We continue to care for our TLC's (people who need extra attention due to health or age consideration).

Furthermore, we will help with Lenten Soup Suppers, as well as have regular devotional potlucks. We will provide money for Christmas for families identified as needy by Neighbor Impact. Angelfest will again get celebrated.

The Deacons have incorporated the Wellness Team under the deacon umbrella. We have a wealth of medical equipment donated by folks that we loan out to those who need it; as well as other things to help our congregation.

Blessings, *Steve Cross*, Deacon CO-Moderato

Quilters Quips March 2025



We can declare this year's Winter Quilt Bee a success. Thanks to all who were there for giving of your time, talents, food, and energy. We missed many of our group who were unable to come due to icy roads, illness, or distance. Sharing new projects, completed quilts along with laughter, suggestions, and new techniques is always a treasure we enjoy.

Then of course there's the food! June's suggestion of a trunk show brought us stories and memories of each quilt shared. What a gift! We were delighted to have Kelsey Hodecker, Lynn's niece in law, join us.

We will be having our 2025 summer quilt camp on August 4th - 7th, so mark your calendars! As always, suggestions for our camp are welcome.

We were able to take advantage of the sales at the closing of Joann's fabric store to purchase supplies we use to provide quilts, throws, and chemo pillows for those who need them.

Becky Dennis

"Dear CPC members and friends, what an awesome God we have who is with us each and every day. It is so special to receive calls and encouraging cards following surgery.

I am so thankful for the kind words and love that is sent from each of you. I am praying for a full recovery and hope to be back to church before too long. Blessing to each of you."

~ Lois Millspaugh



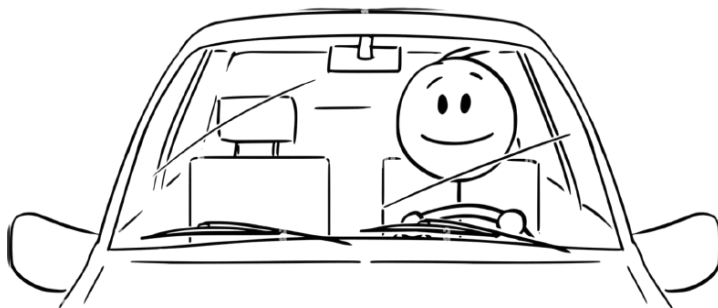
Soup-Making Volunteers Needed

Do you have a passion for cooking? Join us in preparing delicious soups for our Lenten Soup Suppers! On six Wednesday evenings during Lent, we will gather for a heartwarming soup supper and a meaningful Lenten devotion, beginning with Ash Wednesday, March 5th, at 5:30 pm. Sign up in the lobby.



Want to Attend Soup Suppers but Don't Drive at Night?

Sign up in the lobby, and we'll arrange for someone to pick you up and bring you to and from the event. **Can you drive at night and give someone a lift?** Sign up in the lobby as well!



Mitten Tree Thank You

Thank you so much for your generous gifts for the children of Redmond! We received:

- 10 pairs of ski gloves
- 10 pairs of light gloves
- 9 scarves
- 15 warm hats
- 4 pairs of socks

Our Mission Team delivered these wonderful donations to the Redmond Family Access Network (FAN) for distribution among the children. Your kindness is deeply appreciated!



Single's Dinner March 5th

Join the Singles of CPC for a delightful dinner at Applebee's in Redmond. See you on Thursday, March 20th, at 5:00 pm. Bring a friend; it will be good food and great conversation!



A Mission Team Message

Your gifts of time, funds, and goods for helping others are a part of God's work to meet local, regional, and worldwide needs. The Mission Team works for you, providing a channel to contribute the gifts you entrust us with to where they are needed. Here are some needs the team would like to support with your help.



Jericho Table | Safe Parking

With a change in the meal preparation from Bethlehem Inn to Family Kitchen, CPC's designated cost has been reduced. This has left plenty of funds in our account. We would suggest that, if you would like to support Mission Team projects with individual donations, rather than further contributions to Jericho Table at this time, those funds be redirected to Safe Parking to cover utility costs for our guests in that program. Our commitment is \$100 per month per resident. At this time, we only have enough in the dedicated Safe Parking account to cover until August. Please designate "Safe Parking" on your contribution.

Disaster Assistance

The recent California wildfires and flooding in various locations makes our hearts go out to those experiencing loss. The Mission Team would like to suggest a couple of ways for you to contribute to those in need as a result of these tragedies. The first is through the Presbyterian Disaster Assistance program. They offer three ways to contribute:

- 1) Giving – Your monetary gifts may be given to CPC and designated for Presbyterian Disaster Assistance through the Mission account or online at pcusa.org/CAfires25 (wildfire relief) or pcusa.org/disaster-response (national and international options).
- 2) Action – Opportunity is available for group hands-on involvement in creating Gift of the Heart kits for survivors. The kits are described online at pcusa.org/GOHkits.
- 3) Prayer – Bring your cares and concerns to God, who is our refuge and strength. You may find a flyer in the narthex with this information and more.
- 4) Blood Donations – The Red Cross has a critical need for blood donors. If you are able to donate blood, look for details below.

Red Cross Blood Donation

Severe winter weather and wildfires have forced thousands of blood donations to go uncollected. There is an emergency shortage of platelets, as well as types O- and B- blood. The Mission Team encourages those who are able to tap into local drives. You will need to register an appointment online at redcrossblood.org/give. Put in your zip code to see the list of upcoming local donation sites. Select the "see times" tab to find the available slots for the type of donation (Blood or Power Red) you prefer and click through to register. Drives scheduled locally for the next few months are listed to the right.



DATE	LOCATION	HOURS
Tue., Mar. 4	LDS Stake 450 SW Rimrock	11:00 AM - 04:30 PM
Wed., Mar. 5	Mountain View Fellowship 1475 SW 35th St.	10:00 AM - 03:00 PM
Mon., Mar. 10	Mountain View Fellowship 1475 SW 35th St.	10:00 AM - 03:00 PM
Tue., Mar. 11	LDS Stake 450 SW Rimrock	11:00 AM - 04:30 PM
Mon., Mar. 17	Grange 812 707 SW Kalama	12:00 PM - 05:00 PM
Tue., Mar. 25	St Thomas Catholic Church 1720 NW 19th St.	10:00 AM - 03:00 PM
Tue., Apr. 1	LDS Stake 450 SW Rimrock	11:00 AM - 04:30 PM
Thur., April 10	Mountain View Fellowship 1475 SW 35th St.	10:00 AM - 03:00 PM
Mon., April 14	St Charles Medical Center 1253 N. Canal Blvd.	09:00 AM - 02:00 PM
Mon., April 21	Grange 812 707 SW Kalama	12:00 PM - 05:00 PM
Thur., May 1	Technology Education Center 2324 SE College Lp.	09:30 AM - 02:30 PM
Thur., May 8	Redmond H.S. 675 SW Rimrock	08:00 AM - 01:30 PM
Mon., May 12	Grange 812 707 SW Kalama	12:00 PM - 05:00 PM
Thur., May 15	Ridgeview H.S. 4555 SW Elkhorn Ave.	08:00 AM - 01:30 PM

Advance Directives are Important

When life brings us a medical crisis, illness, or accident, we need to have an Oregon Advance Directive in place. An advance directive allows you to specify your wishes for health care if you are unable to speak for yourself. If you don't have an advance directive, the hospital must follow the government guidelines.

Before Christmas, a friend suddenly got a horrible pain in his back and laid down. He called his wife on his cell phone for help. She called Emergency, and the last thing he said to her was, "Bring me back." That didn't happen; after a long surgery, he went into a coma and gradually declined. In the midst of her grief, she had no guide and no immediate family to help her.

In contrast, my mother, bless her heart, went to a lawyer and had everything in order and prepaid. It was still emotionally difficult, even though I had help. Oregon Advance Directive forms are online at Oregon Health Authority Caringinfo.org. If uncomfortable with completing the forms, Hospice of Redmond will assist at no charge at 541.548.7483.

Hospice of Redmond needs volunteers and would welcome people from CPC.

Beverly Johnson for The Wellness Team



Four-Leaf Clover

*I know a place where
the sun is like gold,
And the cherry blooms
burst with snow,
And down underneath is
the loveliest nook,
Where the four-leaf clovers grow.*

*One leaf is for hope,
and one is for faith,
And one is for love, you know,
And God put another
in for luck—*

*If you search, you will find
where they grow.*

*But you must have hope,
and you must have faith,
You must love and
be strong—and so—*

*If you work, if you wait, you will find
the place where the
four-leaf clovers grow.*

by Ella Higginson

Interfaith Earth Summit: Climate Safety & Health

Join EMO's 12th annual Oregon Interfaith Earth Summit on March 16th at 1:00 pm through Zoom or in Bend (at Unitarian Universalist Fellowship of Central Oregon 61980 Skyline Ranch Road).

"The Earth Summit is a valuable opportunity to revitalize our community connections and raise up local leadership as together we take faithful action in response to climate change." Rev. Richenda Fairhurst.

Contributions of \$0 to \$25 are welcome for the event.

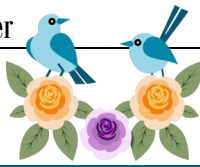
Please register for the event by following the link, whether you plan to attend via Zoom or in person.

Click [HERE](#) if digital or go to the following web address on your pc or phone.

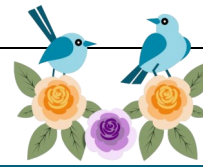
emoregon.org/event/oregon-interfaith-earth-summit-2/





The Presbyterian Women are planning to attend this event. Contact Nancy Patterson if you are interested in joining them.





March 2025



Sun	Mon	Tue	Wed	Thu	Fri	Sat
						1 11:00 Centering Prayer 
2 10:00 Worship 12:00 Spanish Church 4:00 Sermon Zoom Discussion	3	4 10:00 Unitary Group 7:00 Boy Scouts	5  9:00 Caregivers Group 4:30 Bible Study 5:30 Soup 6:30 Ash Wed Service 6:30 Cub Scouts	6 10:00 Quilters 4:45 Spiritual Growth Zoom	7 <i>Office Closed</i> 8:00 Men's Bible Study 6:45 Spanish Bible Study	8 <i>Office Closed</i>
9 9:30 Blood Pressure Check 10:00 Worship 12:00 Spanish Church 4:00 Sermon Zoom Discussion	10 8:00 Property Team Mtg 1:00 Parkinson's Group 3:00 Deacons Mtg	11 10:00 Unitary Group 1:00 Wellness Team Mtg 3:00 Worship Team Mtg 7:00 Boy Scouts	12  2:00 Finance Team Mtg 3:30 Mission Team Mtg 4:30 Bible Study 5:30 Soup Supper 6:30 Cub Scouts	13 10:00 Quilters 4:45 Spiritual Growth Zoom	14 <i>Office Closed</i> 8:00 Men's Bible Study 6:45 Spanish Bible Study	15 <i>Office Closed</i>
16 10:00 Worship 12:00 Spanish Church 4:00 Sermon Zoom Discussion	17	18 10:00 Unitary Group 4:00 Session 7:00 Boy Scouts	19  9:00 Caregivers Group 4:30 Bible Study 5:30 Soup Supper 6:30 Cub Scouts	20 10:00 Quilters 12:00 Singles' Lunch 4:45 Spiritual Growth Zoom	21 <i>Office Closed</i> 8:00 Men's Bible Study 6:45 Spanish Bible Study	22 <i>Office Closed</i>
23 10:00 Worship 12:00 Spanish Church 4:00 Sermon Zoom Discussion	24	25 10:00 Unitary Group 12:30 PW 7:00 Boy Scouts	26 1:00 Mental Health Group 4:30 Bible Study 5:30 Soup Supper 6:30 Cub Scouts	27 10:00 Quilters 4:45 Spiritual Growth Zoom	28 <i>Office Closed</i> 8:00 Men's Bible Study 6:45 Spanish Bible Study	29 <i>Office Closed</i>
30 10:00 Worship 12:00 Spanish Church 4:00 Sermon Zoom Disc.	31					

March

Birthdays

3/1 Lois Ahern
 3/3 Frank Carter
 Marsha Enriquez
 3/4 Lee Mink
 3/6 Tom Barber
 3/11 Janet Hucke
 3/13 Don Shaw
 3/14 Lynn Hodecker
 3/26 Becky Dennis
 3/27 Rick Hoffman
 3/28 Bert DeYoung
 3/30 Barbara Barber
 3/31 Don Johnson

Anniversaries

3/20 Lee & Sherry Mink
 3/24 George &
 Beverly Johnson

“A good friend is like
 a four leaf clover,
 hard to find
 & lucky to
 have.”

Irish Proverb



Can and Bottle Donations

There have been some questions about CPC's BottleDrop Blue Bag program; here are some FAQ's:



Plastic, metal and glass beverage containers must have OR 10 on their labels, so don't remove, and must be only purchased in Oregon. Returnable beverage containers go way beyond soda, beer and water. On the bottledrop.com website, click on Customer Service, then BottleDrop 101, then the question "What types of containers..." and you can click on a link to the Oregon Liquor Commission Bottle Bill website. We will also post their flyers at CPC for your information.

Crushing cans might feel good but can't be redeemed for less than 50, inside at the counter, so please don't. You can leave a plastic lid on a plastic bottle, but not on metal or glass bottles. Remember to keep containers clean and shake out the drops. When you put glass bottles in the blue bag, no more than 30 in number, and a weight of 20 lbs. or less. A mix of plastic, glass and metals is fine. Of course, no dirt, dangerous materials or biohazards.

You can still bring your Blue Bag to CPC on Sundays, preferably. You can still turn them in yourself at the BottleDrop Redemption Center and scan the QR code on the bag. (Tip: The scanner and automatic door is on the left side of the building; step back a little and the bag scans better.)

Since October, we have received a check for \$150.00 and the ending balance is \$78.00, so keep them coming and maybe give a neighbor one of our blue bags. Proceeds are deposited in the Mission General Fund.

Thank you - *Hannah Grandey*

The article **due date** for the April Lamplighter is
Thursday, March 20th, at noon.

Articles should be sent to Gina at frontdesk@redmondcp.org.
 You will receive a reply letting you know your article was received. *Thanks!*

